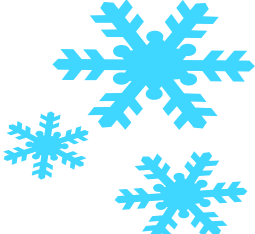


January 2012

MON TUE WED THU FRI

2 HOLIDAY NO SCHOOL	3 Sausage Biscuit or Cereal w/Toast Fruit or Juice	4 Scrambled Eggs w/Toast & Grits or Cereal w/Toast Fruit or Juice	5 Sausage Gravy Breakfast Pizza or Cereal w/Toast Fruit or Juice	6 Pancakes or Cereal w/Toast Fruit or Juice
9 French Toast Sticks or Cereal w/Toast Fruit or Juice	10 Ham & Egg Biscuit w/Grits or Cereal w/Toast Fruit or Juice	11 Waffles or Cereal w/Toast Fruit or Juice	12 Breakfast Grilled Cheese or Cereal w/Toast Fruit or Juice	13 Chicken Biscuit or Cereal w/Toast Fruit or Juice
16 HOLIDAY NO SCHOOL	17 Biscuit & Gravy or Cereal w/Toast Fruit or Juice	18 French Toast Sticks or Cereal w/Toast Fruit or Juice	19 Breakfast Pizza or Cereal w/Toast Fruit or Juice	20 Flapstick or Cereal w/Toast Fruit or Juice
23 REQUIRED WORKDAY NO SCHOOL	24 REQUIRED WORKDAY NO SCHOOL	25 Scrambled Eggs w/Toast & Grits or Cereal w/Toast Fruit or Juice	26 Sausage Gravy Breakfast Pizza or Cereal w/Toast Fruit or Juice	27 Pancakes or Cereal w/Toast Fruit or Juice
30 French Toast Sticks or Cereal w/Toast Fruit or Juice	31 Ham & Egg Biscuit w/Grits or Cereal w/Toast Fruit or Juice			



Meal Prices 2011-2012
 Breakfast—\$1.25 / Reduced—\$.30
 Lunch PK-5—\$2.00 / 6-12—\$2.15
 Reduced—\$.40
 Milk—\$.40

START YOUR DAY OFF RIGHT
 WITH A HEALTHY BREAKFAST!

A variety of skim, 1%,
 and flavored milk is
 offered daily in our
 cafeterias!



We only serve 100%
 fruit juices.



February 2012

MON

TUE

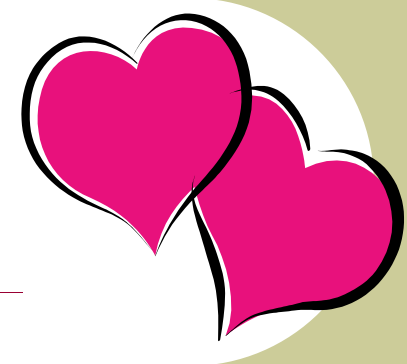
WED

THU

FRI

		1 Waffles or Cereal w/Toast Fruit or Juice	2 Breakfast Grilled Cheese or Cereal w/Toast Fruit or Juice	3 Chicken Biscuit or Cereal w/Toast Fruit or Juice
6 Egg & Cheese Biscuit w/Grits or Cereal w/Toast Fruit or Juice	7 Biscuit & Gravy or Cereal w/Toast Fruit or Juice	8 French Toast Sticks or Cereal w/Toast Fruit or Juice	9 Breakfast Pizza or Cereal w/Toast Fruit or Juice	10 Flapstick or Cereal w/Toast Fruit or Juice
13 Biscuit & Gravy or Cereal w/Toast Fruit or Juice	14 Sausage Biscuit or Cereal w/Toast Fruit or Juice	15 Scrambled Eggs w/Toast & Grits or Cereal w/Toast Fruit or Juice	16 Sausage Gravy Breakfast Pizza or Cereal w/Toast Fruit or Juice	17 Pancakes or Cereal w/Toast Fruit or Juice
20 French Toast Sticks or Cereal w/Toast Fruit or Juice	21 Ham & Egg Biscuit w/Grits or Cereal w/Toast Fruit or Juice	22 Waffles or Cereal w/Toast Fruit or Juice	23 Breakfast Grilled Cheese or Cereal w/Toast Fruit or Juice	24 Chicken Biscuit or Cereal w/Toast Fruit or Juice
27 WORKDAY NO SCHOOL	28 Biscuit & Gravy or Cereal w/Toast Fruit or Juice	29 French Toast Sticks or Cereal w/Toast Fruit or Juice		

St. Valentine

Meal Prices 2011-2012

Breakfast—\$1.25 / Reduced—\$.30
 Lunch PK-5—\$2.00 / 6-12—\$2.15
 Reduced—\$.40
 Milk—\$.40

START YOUR DAY OFF RIGHT
 WITH A HEALTHY BREAKFAST!

A variety of skim, 1%,
 and flavored milk is
 offered daily in our
 cafeterias!



We only serve 100%
 fruit juices.



March 2012

MON

TUE

WED

THU

FRI

			1 Breakfast Pizza or Cereal w/Toast Fruit or Juice	2 Flapstick or Cereal w/Toast Fruit or Juice
5 Biscuit & Gravy or Cereal w/Toast Fruit or Juice	6 Sausage Biscuit or Cereal w/Toast Fruit or Juice	7 Scrambled Eggs w/Toast & Grits or Cereal w/Toast Fruit or Juice	8 Sausage Gravy Breakfast Pizza or Cereal w/Toast Fruit or Juice	9 Pancakes or Cereal w/Toast Fruit or Juice
12 WORKDAY NO SCHOOL	13 Ham & Egg Biscuit w/Grits or Cereal w/Toast Fruit or Juice	14 Waffles or Cereal w/Toast Fruit or Juice	15 Breakfast Grilled Cheese or Cereal w/Toast Fruit or Juice	16 Chicken Biscuit or Cereal w/Toast Fruit or Juice
19 Egg & Cheese Biscuit w/Grits or Cereal w/Toast Fruit or Juice	20 Biscuit & Gravy or Cereal w/Toast Fruit or Juice	21 French Toast Sticks or Cereal w/Toast Fruit or Juice	22 Breakfast Pizza or Cereal w/Toast Fruit or Juice	23 Flapstick or Cereal w/Toast Fruit or Juice
26 Biscuit & Gravy or Cereal w/Toast Fruit or Juice	27 Sausage Biscuit or Cereal w/Toast Fruit or Juice	28 Scrambled Eggs w/Toast & Grits or Cereal w/Toast Fruit or Juice	29 Sausage Gravy Breakfast Pizza or Cereal w/Toast Fruit or Juice	30 Pancakes or Cereal w/Toast Fruit or Juice



Meal Prices 2011-2012

Breakfast—\$1.25 / Reduced—\$.30
Lunch PK-5—\$2.00 / 6-12—\$2.15
Reduced—\$.40
Milk—\$.40

**START YOUR DAY OFF
RIGHT WITH A HEALTHY
BREAKFAST!**

A variety of skim,
1%, and flavored
milk is offered daily
in our cafeterias!



We only serve 100%
fruit juices.

